

Pre-Clinical Immunology

For Inquiries:

Tel: +86 (512) 6603 5409
Fax: +86 (512) 6598 1002
Email: CS@wuxiapptec.com

WuXi AppTec is a global leader in providing discovery, testing and manufacturing services for the pharmaceutical, biotechnology and medical device industries. Research-driven and customer-focused, with operations in China and the U.S., WuXi AppTec offers a broad and integrated portfolio of services designed to assist our customers with cost-effective and efficient outsourcing solutions.

WX
LISTED
NYSE



Quality, scientific integrity, cost-effectiveness, and regulatory compliance are essential considerations when selecting an outsourcing partner. The ability to provide these key service components within specified timeframes is vital. WuXi AppTec understands the critical importance of all these aspects and is positioned to provide the laboratory support required throughout the drug development process.

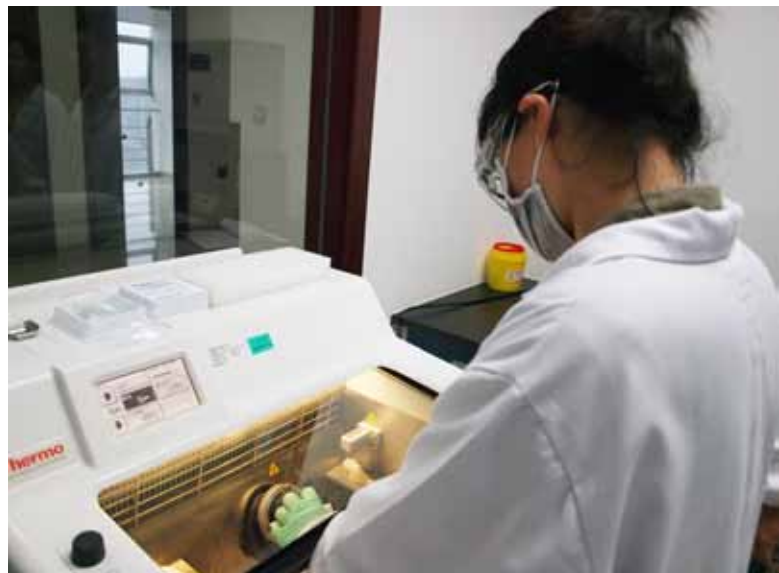
The WuXi AppTec Immunology Laboratory established on November of 2009 and sited at WuXi AppTec (Suzhou) Facility as part of Department of Laboratory Science (LBS).

Choose WuXi AppTec for immunology-specific resources to bring your product to market sooner:

- Regulatory expertise
- Dedicated project management
- World class customer service

Services:

- Immunohistochemistry (IHC)
- Tissue Cross Reactivity (TCR)
- Flow Cytometry
- Immunochemistry

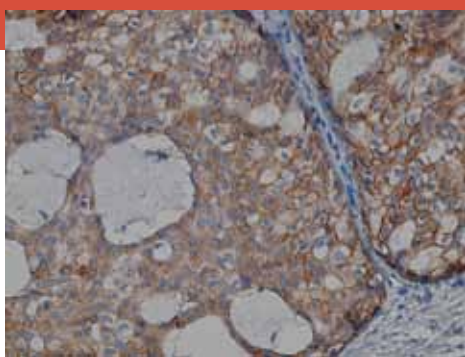


For more information on WuXi AppTec's services please contact:

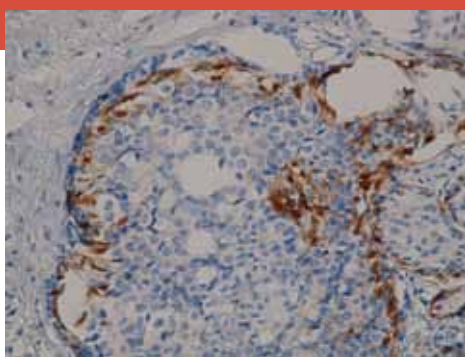
U.S.
+1 (651) 675 2000 • +1 (888) 794 0077
info@wuxiapptec.com

China
+86 (21) 5046 2477
customer_service@wuxiapptec.com

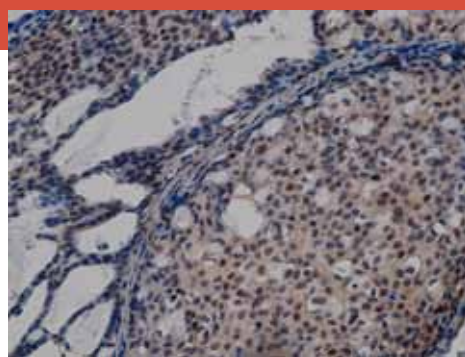
www.wuxiapptec.com



C-erbB2



S-100

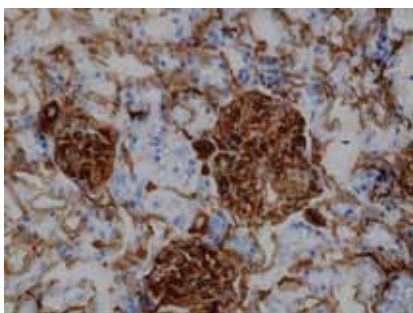


P53

Immunohistochemistry

Our immunohistochemistry services are performed to localize the protein/gene of interest by using customer-supplied antibodies on normal and diseased human tissues as well as Non-human tissues including rat, mouse, beagle dog, and cynomolgus monkey.

- Standardized staining with commercially available antibodies or research antibodies
- Optimization of staining protocols
- Interpretation of immunostaining results by our pathologists
- Comprehensive report of the findings and microscopic images
- High quality tissue (FFPE and Fresh Frozen) with comprehensive clinical data (for human tissue) and QC.



CD31 Staining in Kidney as Staining Control for TCR study (Frozen Section, Normal Tissue of Cynomolgus Monkey, 400×)

Tissue Cross Reactivity

We provide complete and comprehensive Tissue Cross Reactivity Studies to support research efforts or regulatory submission.

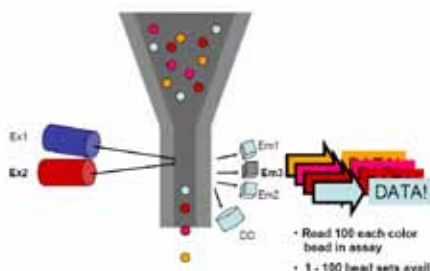
- Normal human tissue bank
- Major tissue bank of primate and other species: frozen and fixed tissues for TCR studies
- Medical records and identification for human tissues
- Study specific protocols prepared to reflect sponsor's requirements
- Comprehensive, high-quality audited reports
- Rapid scheduling and reporting

Immunochemistry

Luminex 200

Multiplexing is achieved through the use of Microspheres Encoded with a Unique Spectral Address.

- Up to 100 analytes in a single microplate well
- Low sample consumption: 25 µL
- Dynamic range: 105
- High sensitivity: 1 pg/mL



For more information on WuXi AppTec's services please contact:

U.S.
+1 (651) 675 2000 • +1 (888) 794 0077
info@wuxiapptec.com

China
+86 (21) 5046 2477
customer_service@wuxiapptec.com

www.wuxiapptec.com