

DMPK *In Vivo* Studies

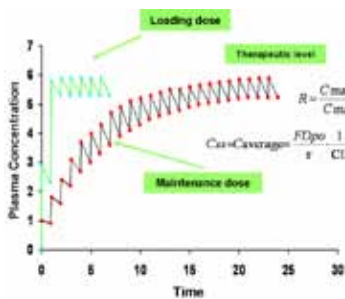
One Week Turnaround

Competitive Prices

WuXi AppTec is a global leader in providing discovery, testing and manufacturing services for the pharmaceutical, biotechnology and medical device industries. Research-driven and customer-focused, with operations in China and the U.S., WuXi AppTec offers a broad and integrated portfolio of services designed to assist our customers with cost-effective and efficient outsourcing solutions.

WX
LISTED
NYSE

DMPK/ADMET division at WuXi AppTec offers a comprehensive series of drug metabolism and pharmacokinetic studies in support of drug discovery, preclinical and clinical development. With state-of-art instrumentation and data management system, we provide fast turnaround, high quality data at competitive prices. Our clients have direct access to WuXi technical staff and receive regularly scheduled updates and prompt feedback to their inquiries.



- Toxicokinetics
- Bioequivalence
- Dose ranging and proportionality
- Mass balance
- Biliary vs, urinary excretion
- Tissue distribution
- Metabolite profiling and identification
- PK/PD study in animal disease models

In Vivo Studies

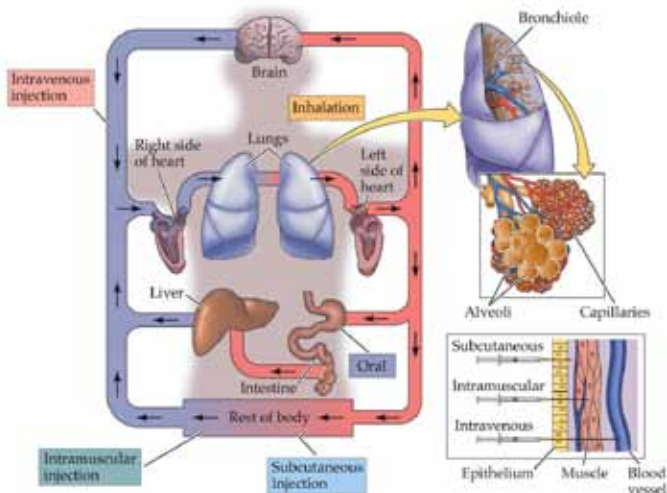
- Both large and small molecules
- Service Offering

Bioavailability

Single and multiple-dose pharmacokinetics

➤ *In Vivo* Dosing

- IV bolus (single and cassette dosing)
- IV infusion



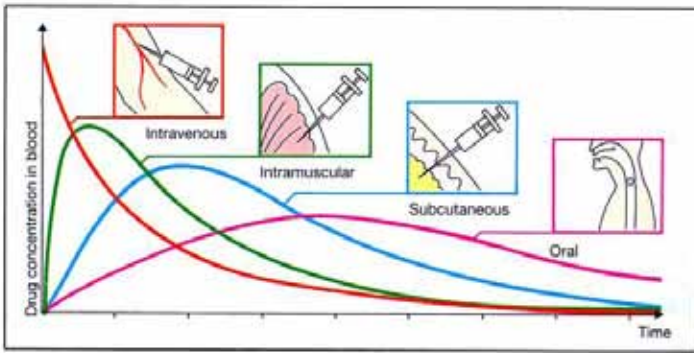
- Oral
- Subcutaneous
- Intra-peritoneal

For more information on WuXi AppTec's services please contact:

U.S.
 +1 (651) 675 2000 • +1 (888) 794 0077
 info@wuxiapptec.com

China
 +86 (21) 5046 2477
 customer_service@wuxiapptec.com

www.wuxiapptec.com



- Intra-muscular
- Intra-nasal
- Intra-tracheal
- Intra-duodenal infusion
- Intra-portal vein infusion

- PE Microbeta TriLux 1450 Liquid Scintillation Counter
- PE Scintillation Counter 2910R
- BD Biosciences FACS Calibur Flow Cytometer

➤ **Species**

- Rodent, rabbit, guinea pig, hamster
- Feline
- Canine
- Non-human primate

➤ **Biological Matrices**

- Blood/serum/plasma
- Urine/feces
- Bile
- Cerebrospinal fluid
- Tissues or tumor specimens



➤ **Equipment**

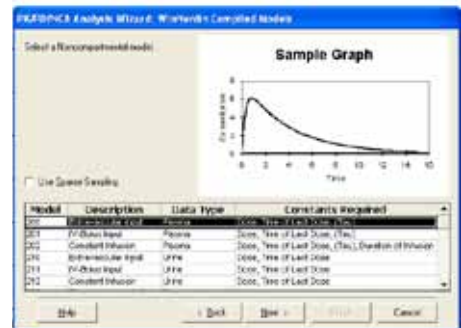
- LC/MS/MS API 4000 equipped with Waters UPLC
- Agilent 6410 LC/MS/MS



- Finnigan Quantum Ultra
- Beckman Optima XL Ultracentrifuge
- Mesoscale Sector Imager 6000
- FlexStation III
- ABI 7500
- Envision Multilabel Reader 2103

➤ **Deliverables**

- Sample concentrations
- PK parameters calculated using WinNonlin



For more information on WuXi AppTec's services please contact:

U.S.
 +1 (651) 675 2000 • +1 (888) 794 0077
 info@wuxiapptec.com

China
 +86 (21) 5046 2477
 customer_service@wuxiapptec.com

www.wuxiapptec.com